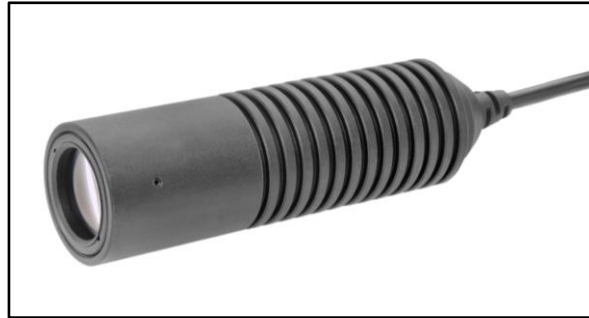
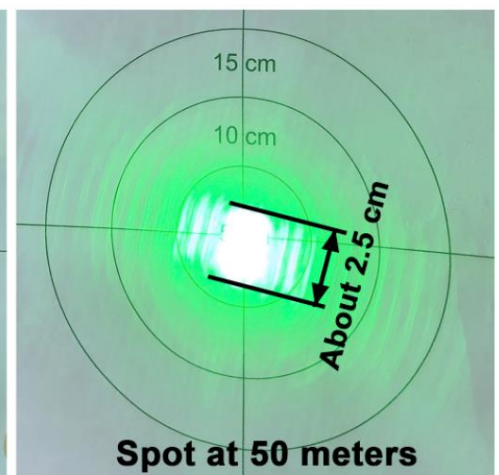
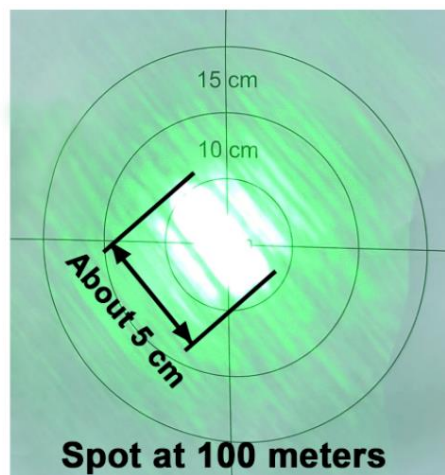
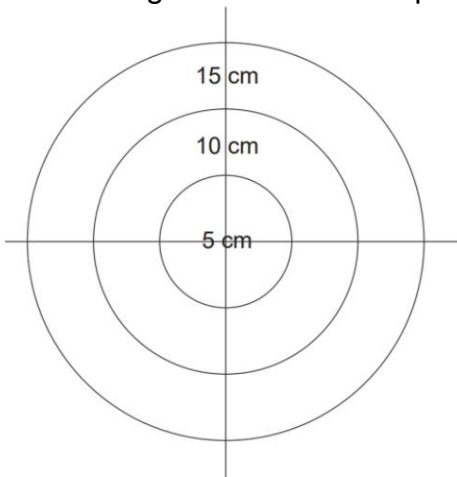


## VLM-520-92 LPB

### High Power Green Laser Module for Ultra Long-Range Application



An integrated high-power direct green laser diode with a 20mm diameter, a long back focus aspherical lens, and an auto-current control board are used to collimate a high-power green laser beam with extremely small divergence. This laser module is designed for ultra long-range application in both daylight and nighttime. It is suitable for various long-range applications, including targeting, sensing, monitoring, scanning, alignment and bird repellent.



#### FEATURES:

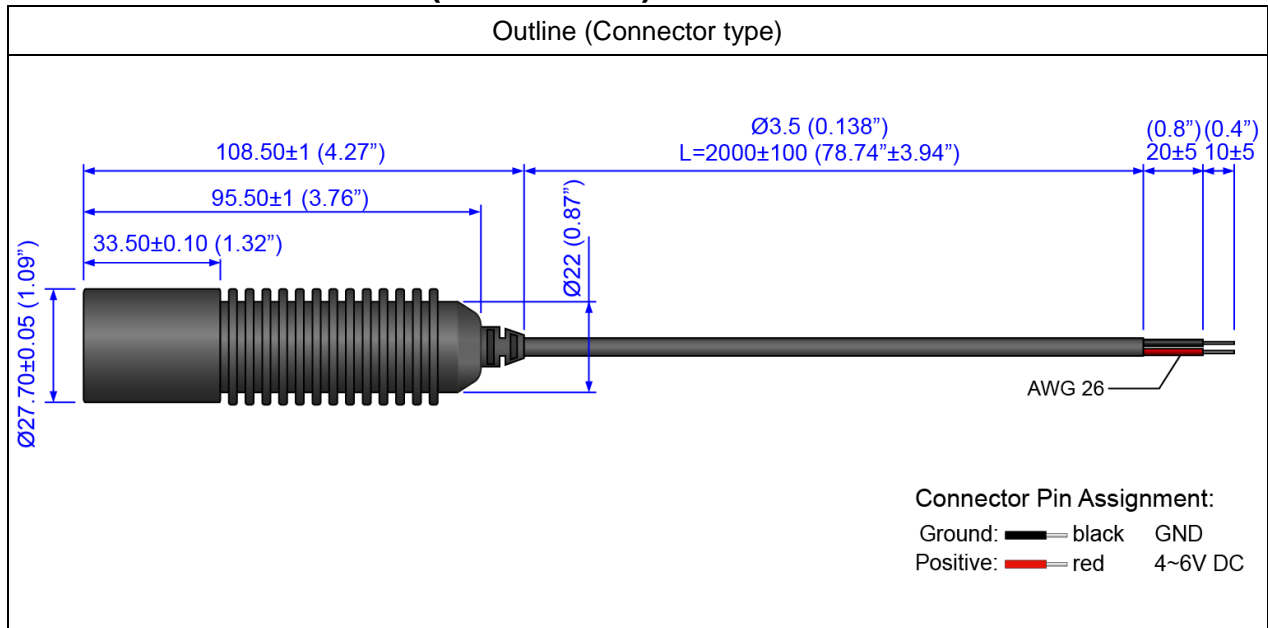
- Up to 400mW. Less than 0.1 mRad divergence, laser spot is approximately  $5\pm 1$  cm at a distance of 100 meters.
- Can be visible under direct daylight, with potential visibility of several kilometers (or miles) during nighttime.
- Suitable for a wide range of long-range applications, including targeting, sensing, monitoring, scanning, alignment and bird repellent.
- Dimensions :  $\varnothing 27.7 \times 95.5$  mm ( $\varnothing 1.09" \times 4.27"$ )
- Wavelength : 505~525 nm. 4~6 VDC operation.
- Connection type : Lead wire. IP67 waterproof.

#### APPLICATIONS:

- Capabilities for long-range targeting, sensing, monitoring, scanning, and alignment, adaptable for both day and night conditions, whether situated indoors or outdoors.

## VLM-520-92 LPB

### OUTLINE DIMENSIONS (UNITS: mm)



### SPECIFICATIONS

SPECIFICATIONS		VLM-520-92 LPB
1	Dimensions	Ø 27.7 x 95.5 mm (Ø1.09" x 4.27")
2	Weight	<75g
3	Operating voltage (Vop)	4~6 VDC
4	Operating current (Iop)	Less than 1.5A
5	Optical power*	400±20mW
6	Laser Class	Class 3B
7	Wavelength (λp)	505~525 nm
8	Collimating lens	Aspherical glass lens
9	Output aperture	Ø 12.6 mm
10	Beam shape	Ellipse
11	Divergence(Half Angle)	<0.2mRad
12	Spot size at 100M	5±1 cm
13	Axial Divergence	±3°
14	Operating temp. range	-10°C ~ +60°C
15	Storage temp. range	-20°C ~+85°C
16	Housing material	Aluminum
17	Housing color	Black
18	Potential of housing	Insulated

## VLM-520-92 LPB

19	Electrostatic discharge (ESD)	30KV
20	Moisture sensitivity level (MSL)	Level 1 - acc to JEDEC J-STD-020E.
21	Protection circuit	Reversed supply circuit protection, over-current protection, surge protection, Short circuit protection
22	Vibration resistance	10 to 55Hz, 1.5mm amplitude for 2 hours each in X, Y and Z direction
23	Wire Type	2464 2-WIRE CABLE 26 AWG
24	Cable length	2000±100 mm
25	Mean time to failure (MTTF) 25°C	10000hrs
26	International Protection Marking	IP67
27	Application	Long-range targeting
28	Suggestion work distance	10~1000 meters or above

\*Total output power measured at the aperture of the laser.

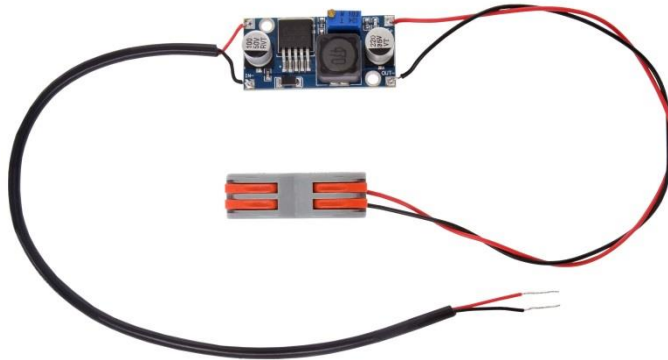
## ORDER CODE

Order Code	Wavelength	Laser Power Output	Laser Class	Connection Type
VLM-520-92 LPB	520 nm	400±20mW	Class 3B	Lead Wire

## SAFETY LABEL



## Optional Accessories



**LMPS-MP2** - DC converter, In: 9-36V, Out: 5V 1A.



**LMPS-C** - Laser Module Power Supply Board, Input: Type C, Output: 5 VDC 2A.

### Feature:

- Type connector power input.
- Output 5 VDC 2A with alligator clips.
- For all Quarton Laser Modules that require 3-6V operation Voltage.



**LMPS-mUSB1** - Laser Module Power Supply Board, Input: micro USB, Output: 5 VDC 2A.

### Feature:

- Micro USB connector power input.
- Output 5 VDC 2A with alligator clips.
- For all Quarton Laser Modules that require 3-6V operation Voltage.

## Optional Accessories



**LMPS-DC1** - Laser Module Power Supply Board, Input: DC Power Jack(5.5 x 2.1), Output: 5 VDC 2A.

### Feature:

- DC Power Jack(5.5 x 2.1) power input.
- Output 5 VDC 2A with alligator clips.
- For all Quarton Laser Modules that require 3-6V operation voltage.



**CLM-ACLIP** - Alligator clip with USB connector.

### Feature:

- Length: 48cm.
- Color: Black.



**CLM-USBSW** - USB Cable Switch.

### Feature:

- Length: 28cm.
- Color: Black.



**CLM-UM3M** - USB to micro USB Cable.

### Feature:

- Length: 3 meters.
- Color: Black.

## Optional Accessories



### **CLM-BP4N3** - Battery pack (4\* AA batteries)

\*\*\* AA Batteries are **NOT** included in package.

#### **Feature:**

- USB Output Voltage: 5 VDC.
- Color: Black.



### **6V Laser Module Power Supply Kit** - 6V laser module power source, fit for all Quarton laser modules that operation voltage is 3~6 volt.

#### **Feature:**

- Included: **CLM-BP4N3** x 1, **CLM-USBSW** x 1, **CLM-ACLIP** x 1