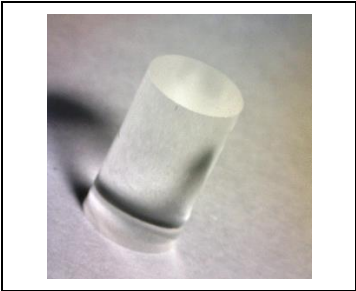
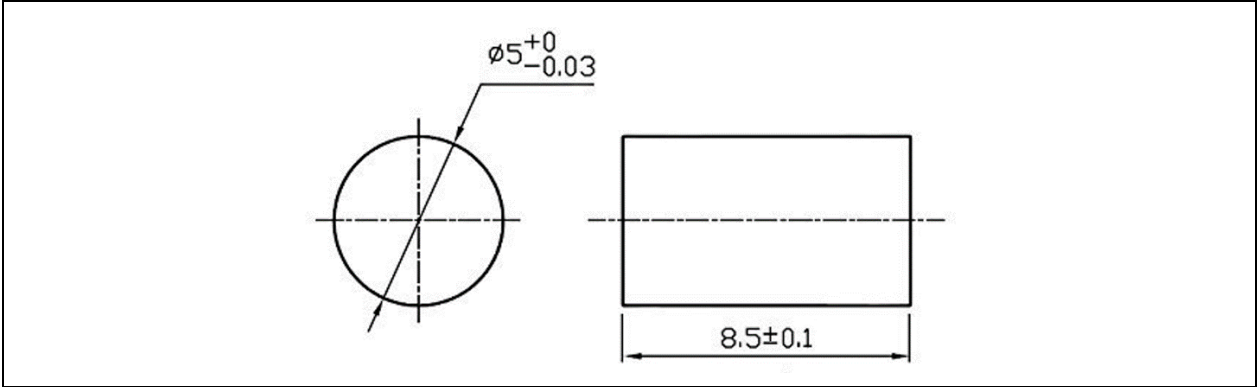


Quarton RL58 Rod Lens Ø5x8.5mm designed for use with Laser Diodes



- FEATURES:**
- The Rod Lens is designed to transform collimated laser beam into a laser line.
 - The typical laser line emission angle is greater than 60°.

OUTLINE DIMENSIONS (UNITS: mm)



SPECIFICATIONS

Model Number:	RL58
Lens Material:	BK7
Lens Diameter:	Ø5.0 mm
Lens Length:	8.5 mm
Surface Quality:	40-20
Laser line emitting angle:	>60°
Storage Temperature:	-40 to 85°C
Operating Temperature:	-30 to 85°C