

QLM-1125 / QLM-1165 / QLM-1225 User Manual

QLM-1125 / QLM-1165 / QLM-1225

Laser Mounts are compatible with laser module / laser pointer / flashlight with OD 4mm to 22.5mm, it's a ideal choose for mounted onto optical tables.

Model name	QLM-1125	QLM-1165	QLM-1225
Dimension	69*66.4 mm	69*67 mm	90*75 mm
Weight	151.4 g	151.6 g	168 g
OD	Up to 12.5mm	Up to 16.5mm	Up to 22.5mm



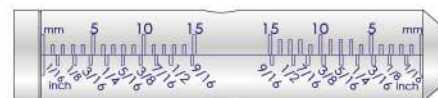
FEATURES



4 directions adjustable.



Can be mounted onto the optical table with screws.
(Screws not included)



Engraved scale for precision adjustable.

CONTENTS

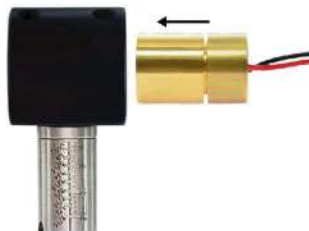


NO.	Part Name	QTY	Part Stock Number
1	Mount holder	1	405-10008G
2	Plastic Screw	4	424-40001G
3	Mount main body	1	405-10006G
4	Wrench (M2)	1	428-020048-011G
5	Hard Cover Carrying Case	1	492-5B103G
6	User Manual	1	494-10709G

MOUNTING



1. Move to desired height and rotate to desired direction, then use wrench tight screws to fix pole firmly.



2. Place your laser module/ laser pointer/flashlight to suitable position.



3. Tight screws to fix laser module/ laser pointer/ flashlight sturdy.



4. Loose the fixing ring. Rotate the adjustable laser holder to find the angle you want.



5. Tighten the fixing ring to fix the laser holder.

APPLICATION



Flashlight with QLM-1165



Laser pointer with QLM-1165



Ø12.5 with QLM-1165



Ø16 with QLM-1165



Ø16 with QLM-1165



Ø10.5 with QLM-1125



Ø6.5 with QLM-1125



Ø4 with QLM-1125